



# Sustained long-term relationship between mining and metallurgical operations and their hosting regions - MIREU

H2020-SC5 Greening the Economy

1.12.2017 – 30.11.2020

Kaisa Turunen, Geological Survey of Finland

 [www.mireu.eu](http://www.mireu.eu)

 MIREU\_EU

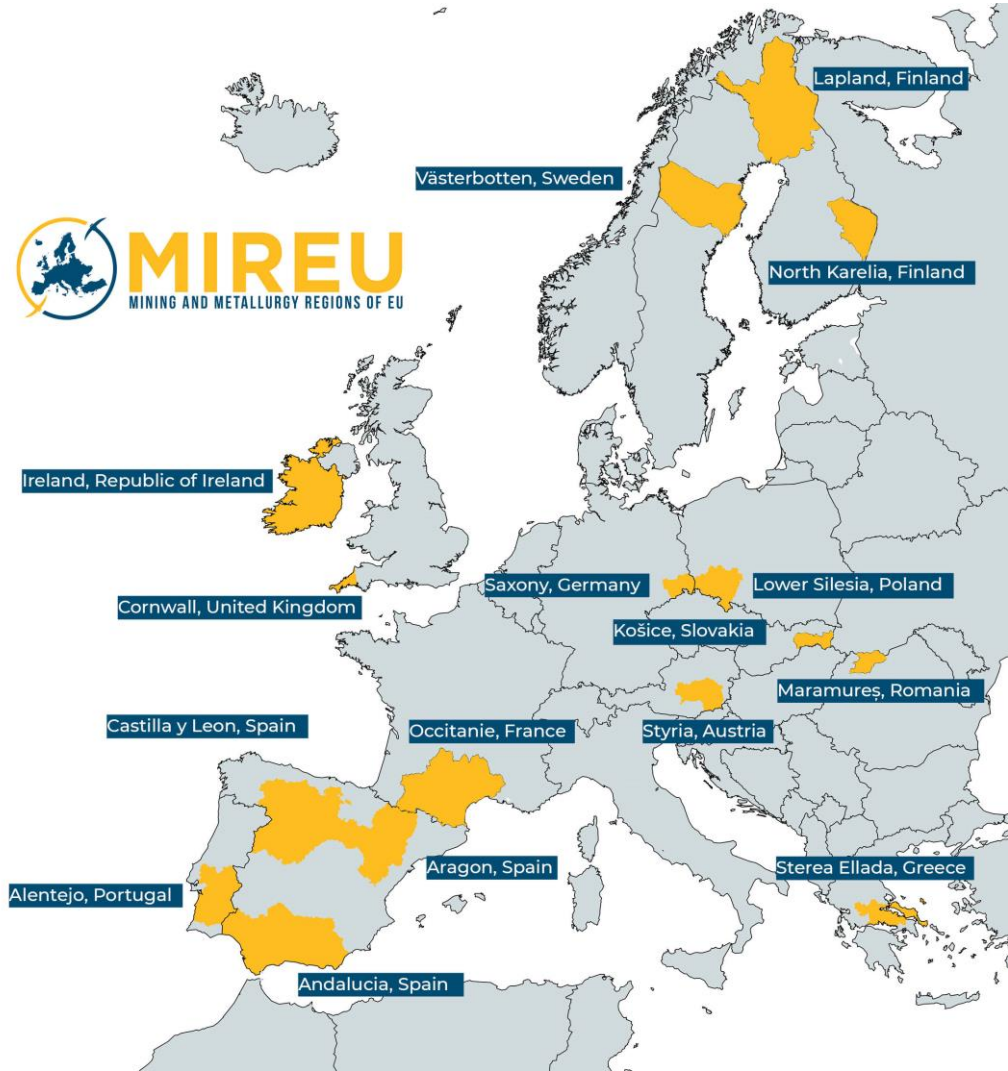
 MIREU.EU

 MIREU



This project has received funding from the European Union's Horizon 2020 research and innovation programme under Grant Agreement No. 776811 | **Topic: H2020-SC5-2017**

The **main objective** of the EU Project **MIREU** was to develop coordination and support measures to establish a permanent **network** of mining and metallurgy regions across Europe.



## WHY REGIONS?

- The regions are the key actors enabling extractive industry through regional policies, land use planning etc.
- The regions often recognize the extractive industries as important to their development
  - Is their voice heard in Brussels?
- Europe has mining and metallurgy regions, but real cooperation between them has been largely lacking
  - Networking increases the ability to affect the EU policy-making



## Focus areas of MIREU

Determining the framework conditions that are either conducive or hampering mining and metallurgical development in Europe by

- reviewing the regulatory and policy conditions and, assessing the skills requirements and investment conditions

Enhance the cooperation between different mining & metallurgy regions by

- seeking synergies between regional development programs and strategies such as smart specialisation (RIS3)

Establishing operational synergies between R&I investments (public and private) and the ESIF funds by

- improving exploitation of R&I results in the regions by joint measures





## Framework conditions

### Policy

- Regional stakeholder involvement in policy development is quite prevalent in MIREU Regions
- Implementation of national minerals policy framework at regional scale or their role in regional land use planning is very limited

### Skills and education

- There is a lack of cooperation between vocational schools, universities and industry:
  - No common curriculum which would help developing a tailored set of skills
- Mining authorities are often elected and therefore lacking experience and knowledge on mining
- Lack of “soft skills”, which results in lack of trust and losing **social acceptance**



## Distribution of EU funding on RM in Countries vs. MIREU Regions

- Germany gets the money, but Spain or Finland coordinate the projects
- Moneywise, Saxony (DE) and Andalucia (ES) are still on top of the list, but UK disappears with Cornwall
- Andalucia is active in using their own sites to serve as case studies in Horizon 2020 – Raw Materials projects
- Difficulties to obtain EU funding may reflect exclusion of raw materials sector in regional strategies (RIS3)

EU fund allocation	Country	Region
1	Germany	Saxony (DE)
2	UK	Andalucia (ES)
3	Spain	Norrboten (SE)
4	France	Styria (AT)
5	Finland	East and North Finland
6	Sweden	Ireland
7	Greece	Lower Silesia (PL)
8	Austria	Occitane (FR)
9	Portugal	Castilla y Leon (ES)
10	Poland	Alentejo (PT)

## Regional innovation strategies (RIS3)

Some MIREU regions do not have mining and metallurgy prioritised in their national or regional RIS3

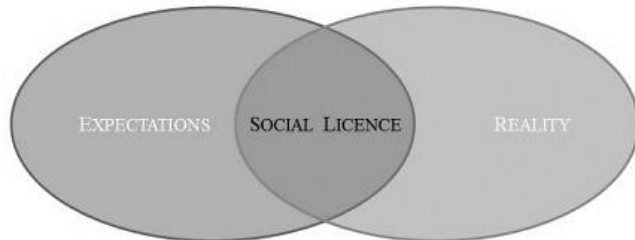
Creating conditions for the whole value chain and its related activities should be an action to be included in the RIS3 in all regions



One issue which stood out in almost all studies:  
**SOCIAL ISSUES** (engagement, awareness, licence, community commitment, corporate responsibility, local/regional, NIMBYISM...)

Quite often social issues hadn't been taken into account, or in contrast were presented as one of the solutions to the given issue.

MIREU have been addressing these complex issues in WP4 on Social licence to operate



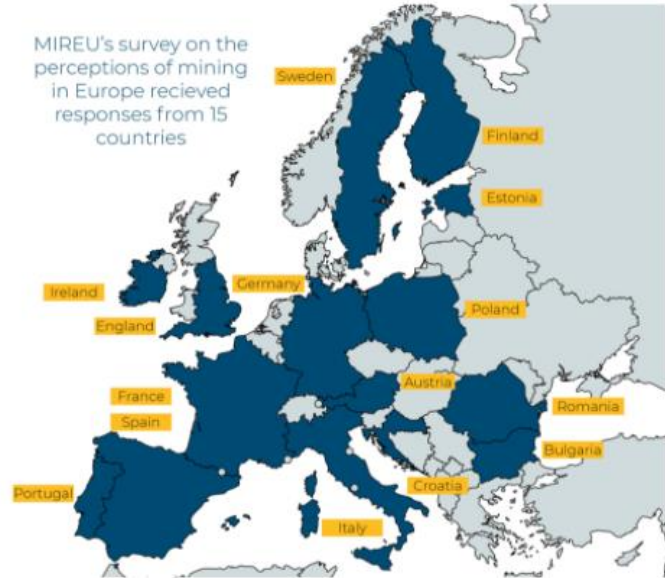


## Perception on mining in regions

Targeted online survey in 7 languages

- In the Portuguese survey mining is perceived as beneficial for society while simultaneously being harmful to communities
- The Finnish and Swedish results show a belief that mining benefits society more than communities
- The Polish survey is objectively the most positive toward mining
- For all of the countries, focusing on how mining can benefit communities would likely improve attitudes toward mining as a whole

- Austria
- Bulgaria
- Croatia
- England
- Estonia
- Finland
- France
- Germany
- Ireland
- Italy
- Poland
- Portugal
- Romania
- Spain
- Sweden



## Perception on mining in Europe

- All stakeholder groups across Europe feel something is wrong with the way mining is conducted in Europe today and that something needs to be changed. Keeping things as they are is not an option.
- While there are flaws, people want change through legislation.
- No matter how responsibly companies operate, this alone is not enough to ensure there will be an overall acceptance of mining. To have acceptance, government must step in and play a larger role.
- Self-determination is not as important in Europe as in other parts of the world, but it is still important. The way Europeans want to see that self-determination realised, however, is via legislation.

# REGISTRATION OPEN

# MIREU WEBINAR SERIES

**25 November | 10-13 CET**

The soft skills approach to responsible mining and metallurgy: education as a key ingredient for societal SLO

**2 December | 14-17 CET**

Funding and investment conditions, how to attract money but also to trigger innovation and expertise in Europe

**3 December | 14-17 CET**

Network of Mining and Metallurgy European Regions - Bundling forces and giving the regions a voice in Brussels

REGISTER AT MIREU WEBSITE [www.mireu.eu](http://www.mireu.eu)



To guarantee the continuation of the network, a **Council of Mining and Metallurgy Regions of Europe (CoMMER)** will be established.

This permanent regional network and raw materials-focused working group welcomes also new regions to join.

CoMMER Kick-off coming soon, stay tuned!

[www.mireu.eu](http://www.mireu.eu)





Thank you

[www.mireu.eu](http://www.mireu.eu)

[kaisa.turunen@gtk.fi](mailto:kaisa.turunen@gtk.fi)

